



# CHEMPRO PHARMA PRIVATE LIMITED

Superior Quality  
Higher Affordability  
Reliable Service





# Table Of Contents



Facilities



Operations



Strengths



Customer-Centric



Services



Contact

# Facilities

- ❖ Customs-approved warehouses managed by GDP-certified personnel
- ❖ Cargo consolidation and palletization arrangements done batch-wise
- ❖ Shrink wrapping and temperature controlled storage facilities





# Strengths



- ❖ Completely integrated pharmaceutical company offering end-to-end solutions across all product categories
- ❖ Recognized name in the market with substantial goodwill and are considered a trusted value chain partner by all
- ❖ Offer value-added services such as extended credit payment terms to all pre-approved customers
- ❖ 100% customer satisfaction guaranteed!



# Strengths

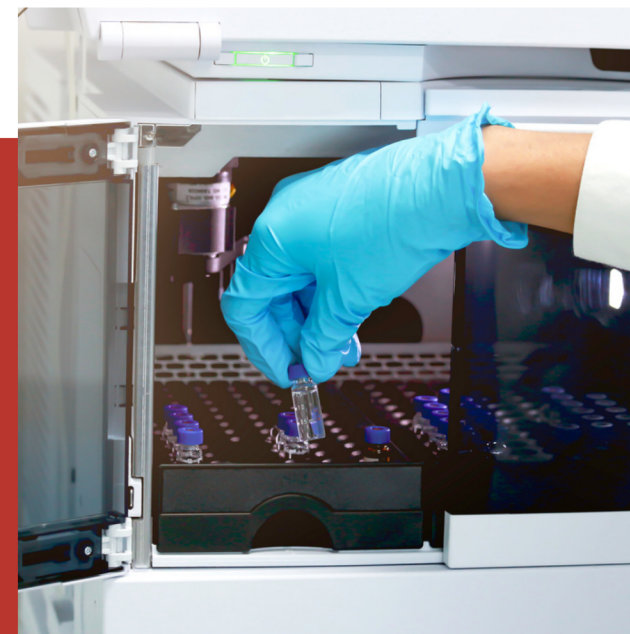


- ❖ Possess 40+ years of experience in international trade, cargo consolidation, and warehousing
- ❖ Upholding the highest standards of ethics, transparency, and regulatory compliance
- ❖ In-house logistics teams are always present, proactive, and vigilant throughout the shipping process
- ❖ Committed to handling and resolving all quality issues promptly with no added cost to our customers

# Services



**Pre-Shipment  
Sampling**



**Quality Conflict  
Resolution**



**Claim  
Settlement**

# Services



**Just-In-Time  
Inventory**

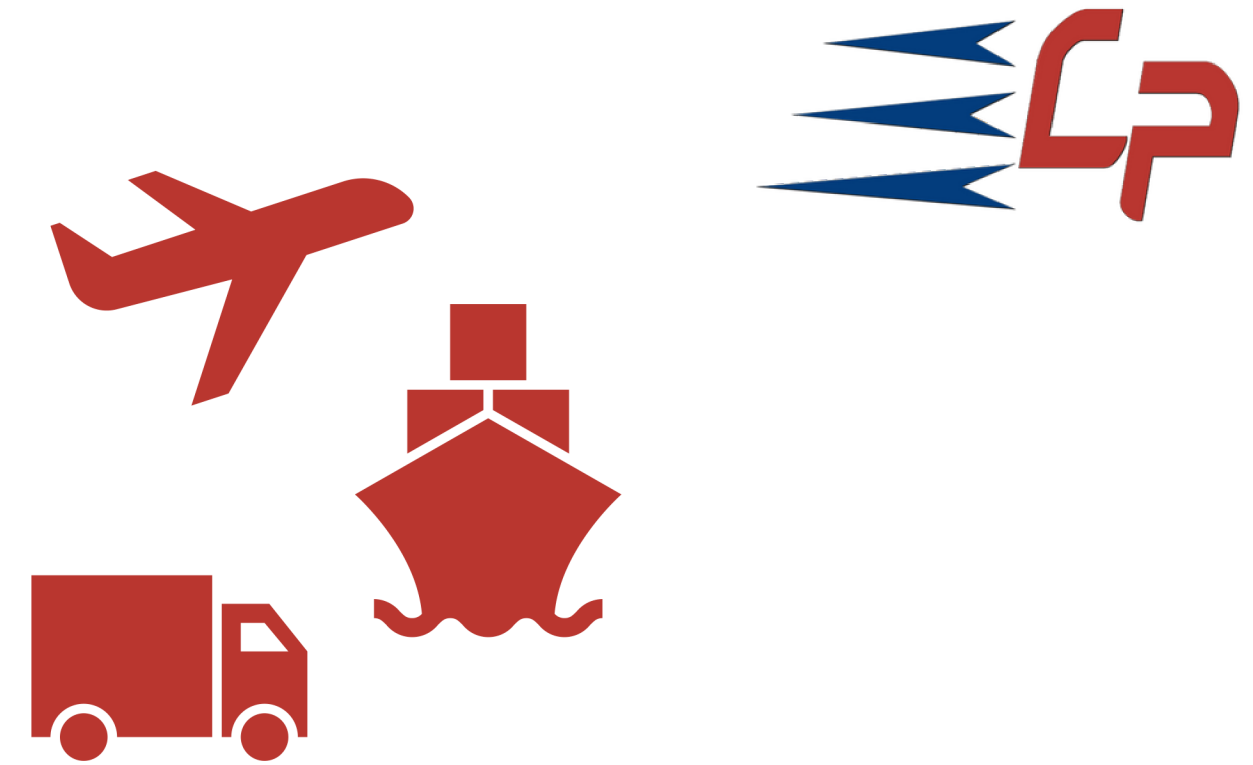


**Warehousing  
& Packaging**



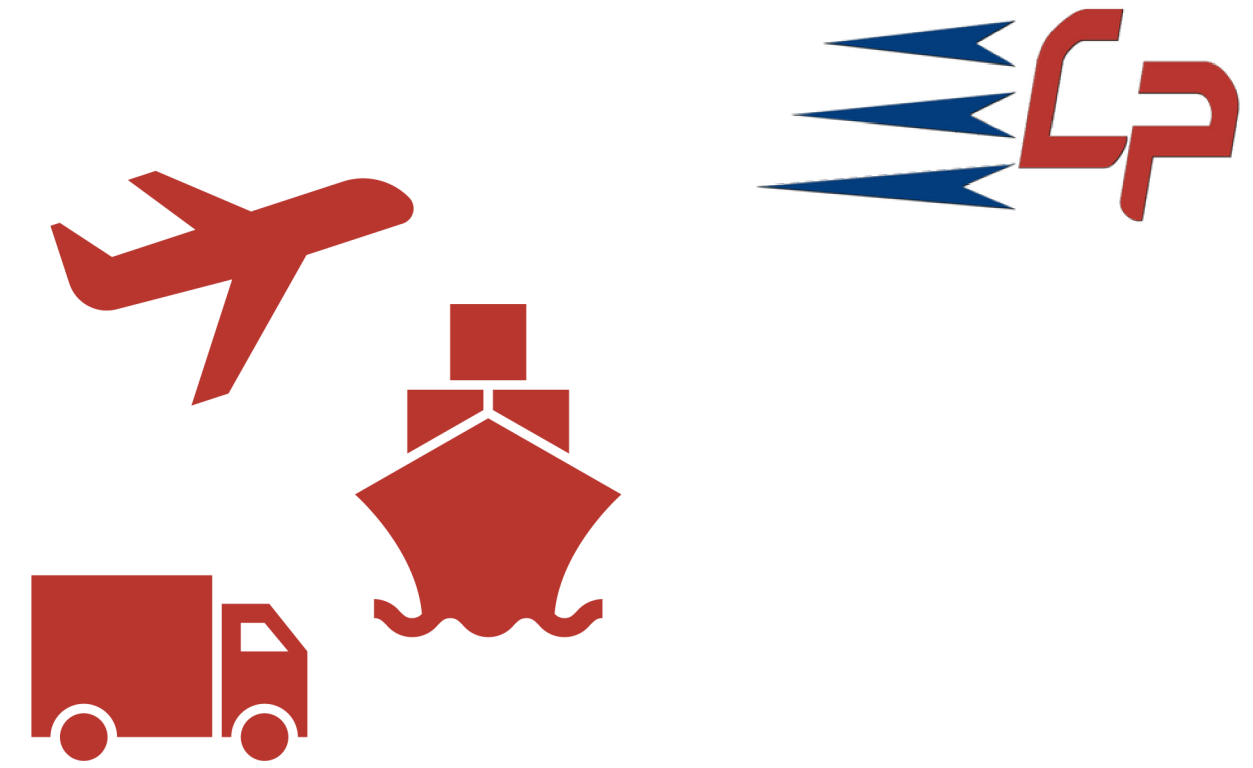
**Container Stuffing**

# Operations



- ❖ End-to-end supply chain management that starts from the manufacturing site to the port of delivery
- ❖ Shipments are dispatched to our warehouses in Mumbai, Hyderabad, and Ankleshwar
- ❖ Inspections are carried out with pre-shipment sampling and testing. Repackaging is done if any damages are observed
- ❖ Palletization, shrink wrapping, and container stuffing are arranged as required

# Operations

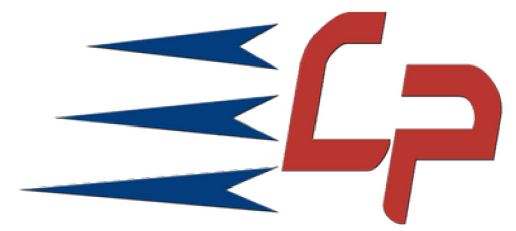


- ❖ Packing, palletization, stuffing details, and photos are shared with clients for approval prior to dispatching each shipment
- ❖ Specialized GDP-certified team that supervises operations for enhanced support, swift movement, and timely delivery
- ❖ Shipments are diligently coordinated from the port of loading to the port of delivery

# Customer-Centric



- ❖ All quality-related issues are settled with no additional cost to our customers
- ❖ Either the cargo is replaced or refunds are remitted if quality claims are substantiated with appropriate documentation
- ❖ Reimport and replacement of any faulty goods are offered with zero cost to our customers
- ❖ Joint testing of retained samples is conducted at the docks in case there are any discrepancies in results



# Contact



<https://www.chemprogroup.com/pharma/index.html>



[pharma@chemprogroup.net](mailto:pharma@chemprogroup.net)



<https://www.linkedin.com/company/chempro-group/>



+91 - 22 - 40048862 / +91 - 22 - 40945240 / +91 - 22 - 43486486





# THANK YOU!

Superior Quality  
Higher Affordability  
Reliable Service